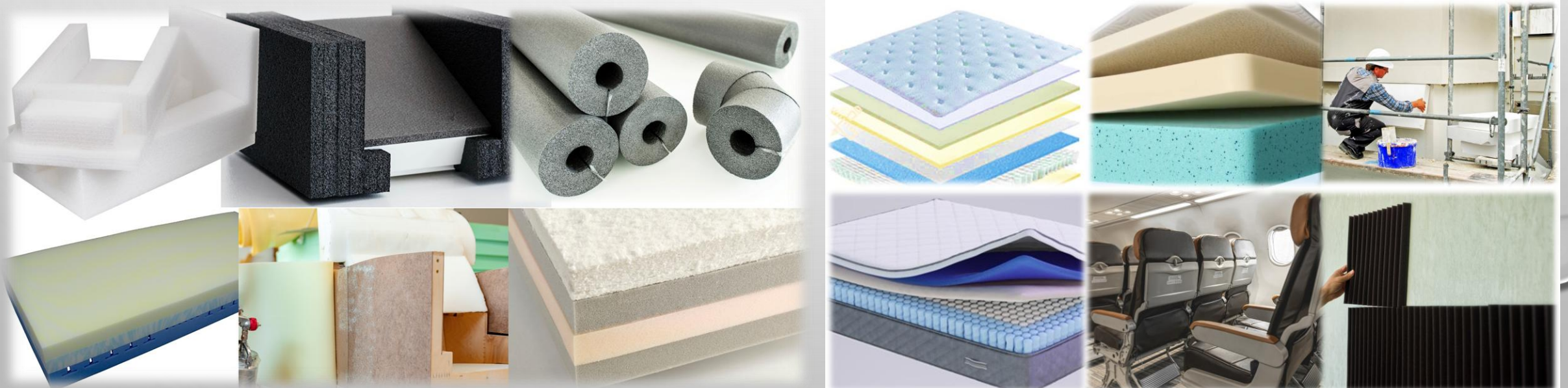




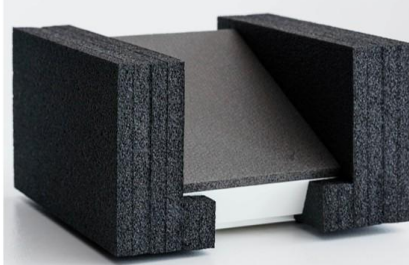
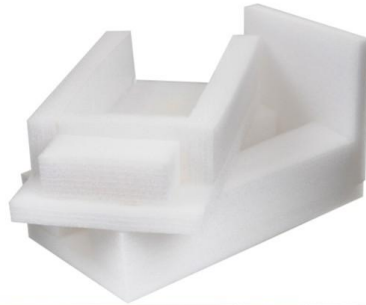
**AIT Chemical Coral Industries
QUICKBOND™ Water-Based Adhesives
for VOC and Solvent-Free
Foam Bonding**

AIT Chemical Coral Industries Pioneered Some of the Water-Based Adhesives Meeting Challenges of Foam Bonding Industries:

1. **World's first EPE foam bonding water-based adhesive**
 - **EPE laminating water-based contact adhesive**
2. **Instant bonding PU and gel foam water-based adhesive**
3. **Water-moisture-resistant foam bonding water-based adhesive**

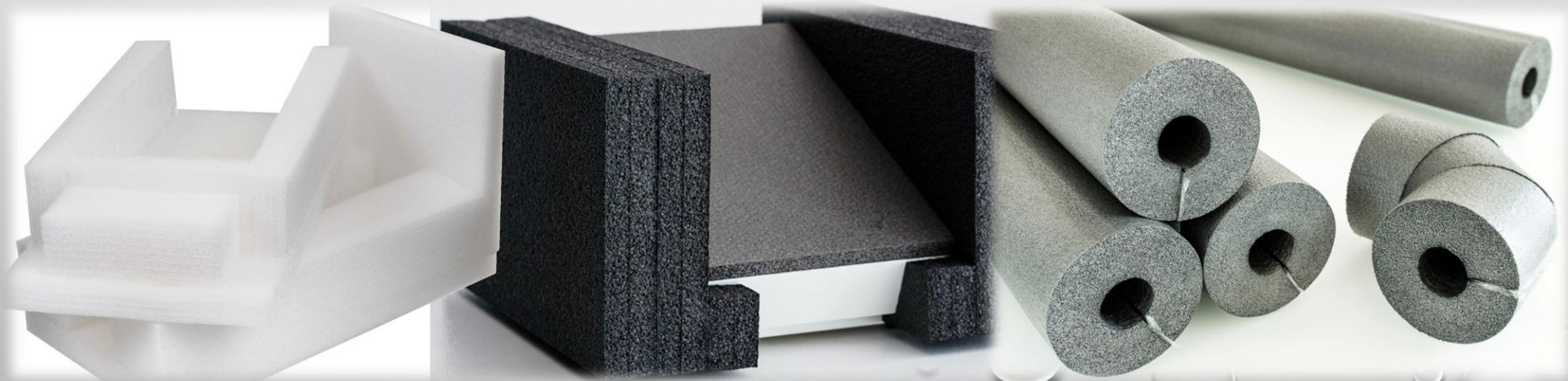


EPE: Foam choice for packaging, insulation, automotive, sports, furniture, and construction



AIT Chemical Coral Industries Pioneered Some of the Water-Based Adhesives Meeting Challenges of Foam Bonding Industries:

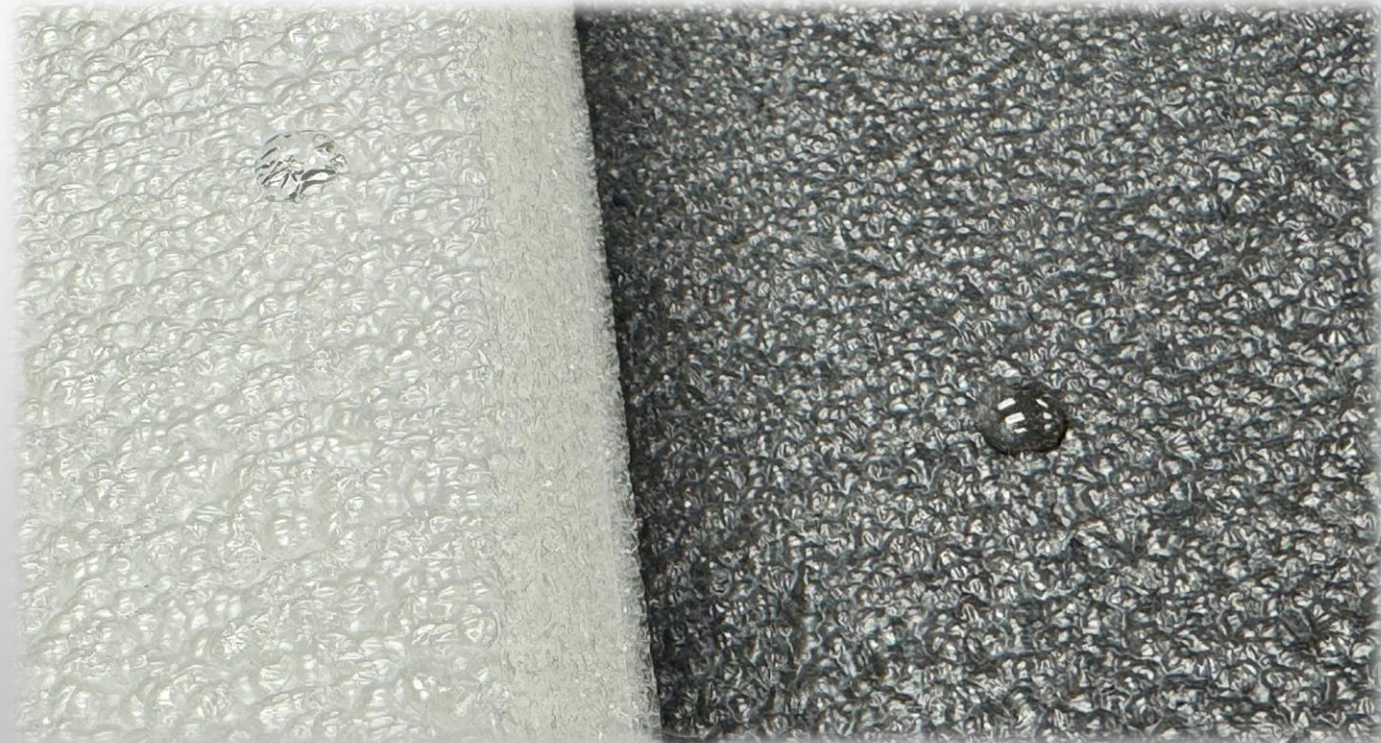
1. **World's first EPE foam bonding water-based adhesive**
 - **EPE laminating water-based contact adhesive**
2. **Instant bonding PU and gel foam water-based adhesive**
3. **Water-moisture-resistant foam bonding water-based adhesive**



EPE: Foam choice for packaging, insulation, automotive, sports, furniture, and construction

Why is EPE Difficult to Bond? EPE is inherently:

- **Very low surface energy (~ 31 dynes/cm), and thus poor wettability**
- **Closed-cell structure**



EPE: Foam choice for packaging, insulation, automotive, sports, furniture, and construction

Traditional bonding methods:

- **Solvent-based adhesives**
- **Hot melts**
- **Heat lamination**
- **Flame bonding**

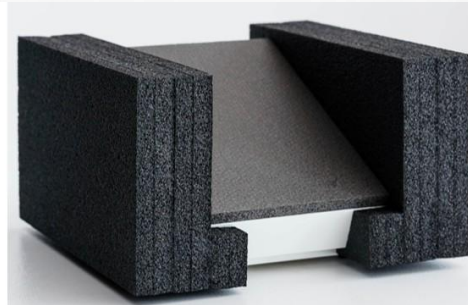
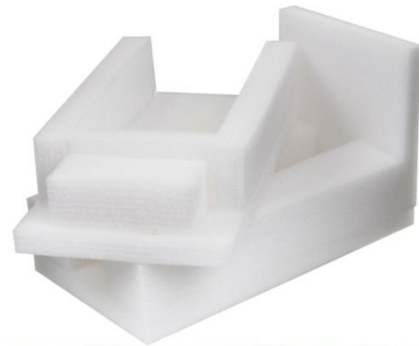


Incompatible with the market requirements:

- ✓ **Low-VOC manufacturing**
- ✓ **Worker safety**
- ✓ **Non-flammable processing**
- ✓ **Recyclability**
- ✓ **Automation compatibility**



**THE WORLD'S FIRST AND PROVEN
WATER-BASED CONTACT ADHESIVE:
AB2750-EFB AND AB2750-PLUS FOR
EPE-PE, EPP-PP BONDING**

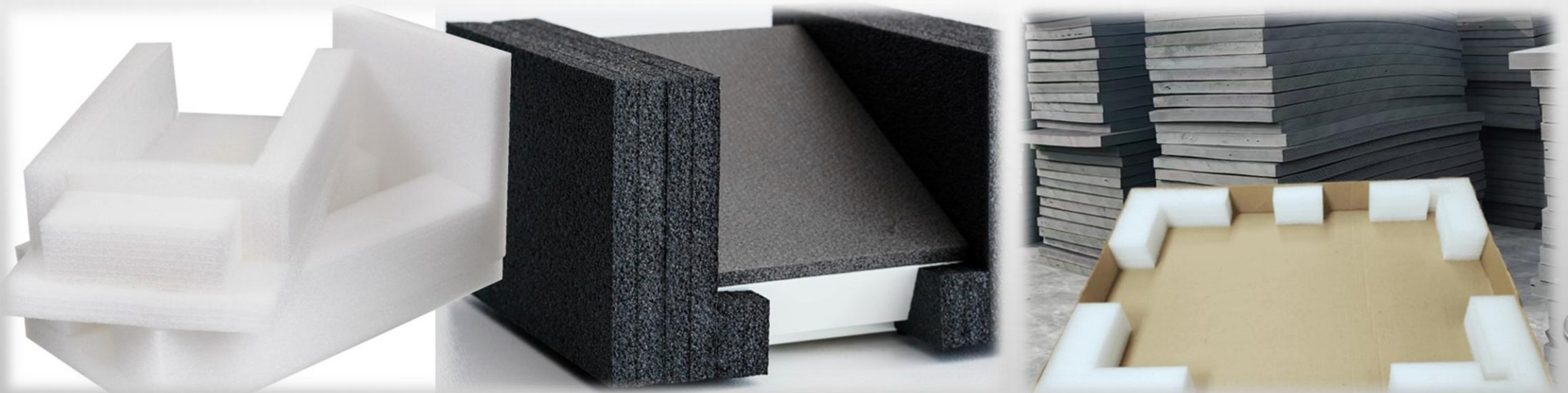


AB2750-EFB & AB2750-PLUS SOLVENT-VOC-FREE
WATER-BASED CONTACT ADHESIVE
FOR EPE-TO-EPE, AND
EPE-TO-SUBSTRATE BONDING

- **EXCELLENT WETTING TO EPE AND SUBSTRATES**
- **POLYOLEFIN AFFINITY**
- **FLEXIBILITY**
- **FAST GREEN STRENGTH**

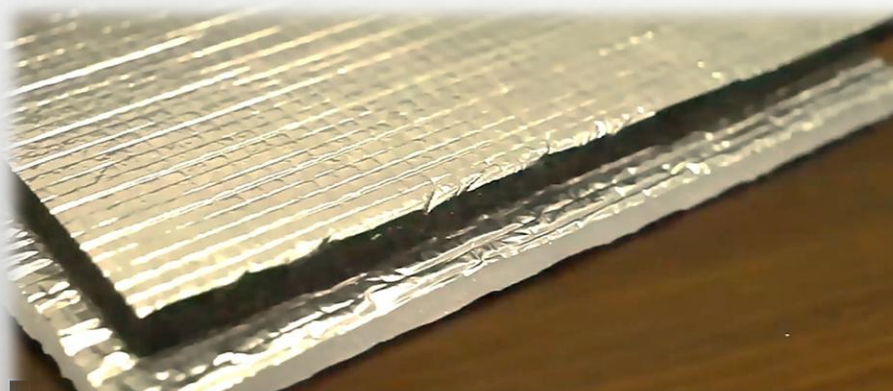


**AB2750-EFB & AB2750-PLUS WATER-BASED ADHESIVE
FOR
EPE-TO-EPE, EPE-TO-CORRUGATED, EPE-TO-SUBSTRATE
BONDING FOR PRODUCT PACKAGING PROTECTION**



Protective packaging; Electronics packaging; Appliance cushioning; Furniture packaging; Medical packaging

AB2750-PLUS WATER-BASED ADHESIVE: EPE-TO-METAL LAMINATION FOR REFLECTIVE INSULATION



Applications:

- Roof insulation
- HVAC insulation
- Building wrap
- Pipe insulation

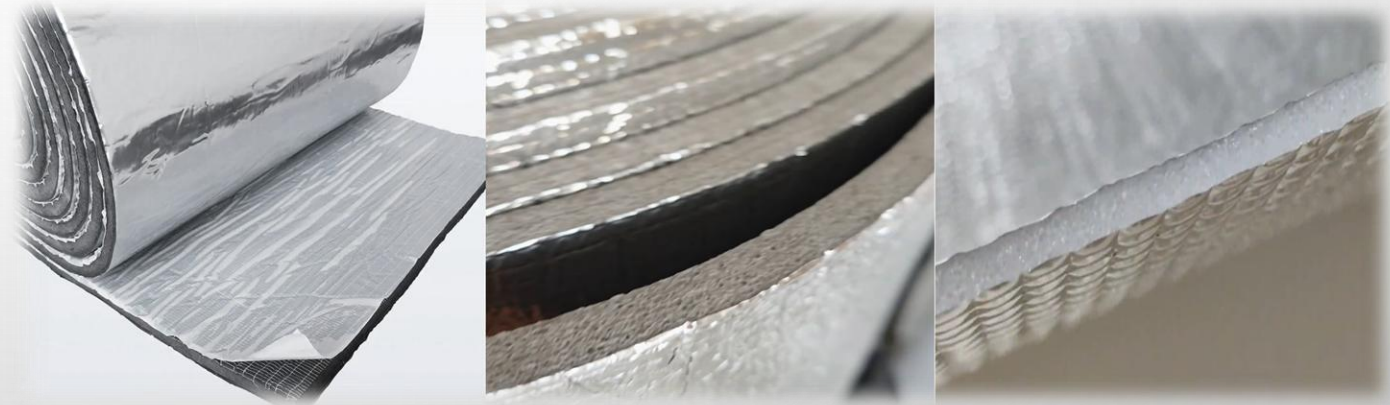
AB2750-PLUS WATER-BASED ADHESIVE: EPE-TO-METAL FIELD INSTALLATION

Building industry market pain points:

- ✓ Solvent emissions
- ✓ Foil delamination
- ✓ Heat distortion

AB2750-PLUS water-based contact adhesive:

- ✓ **VOC-free and solvent-free for building products regulation compliance**
- ✓ **Green building certifications**
- ✓ **Strong foil adhesion to EPE without primer or other surface preparation**



AB2750-PLUS WATER-BASED ADHESIVE
FOR
AUTOMOTIVE INTERIOR FOAM BONDING



AB2750-PLUS, AB2550-PFB

WATER-BASED ADHESIVE

FOR

AUTOMOTIVE INTERIOR FOAM BONDING



Applications:

- **Door panels**
- **Headliners**
- **Trunk liners**
- **NVH insulation**
- **Carpet underlay**

Automotive OEMs are aggressively reducing:

- **VOC**
- **Fogging**
- **Solvent use**



AB2750-EFB Water-based contact adhesive for automotive interior EPE foam bonding



- ✓ **Fogging compliance** with VOC-free and fully polymerized dispersion with no condensable monomers
- ✓ **Flexible bond line** with low glass transition temperature polymers
- ✓ **Heat resistance** with fully polymerized dispersion
- ✓ **Low odor** with solvent-free water-based dispersion polymers

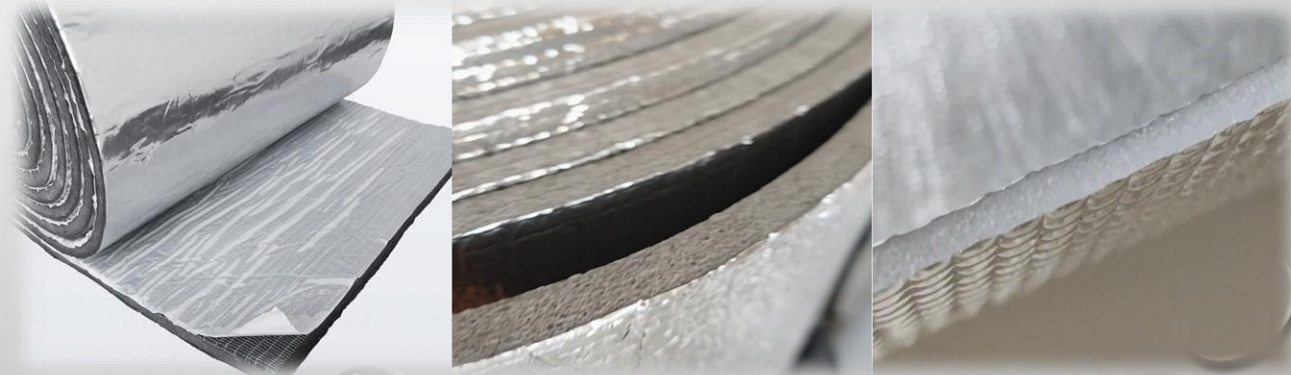
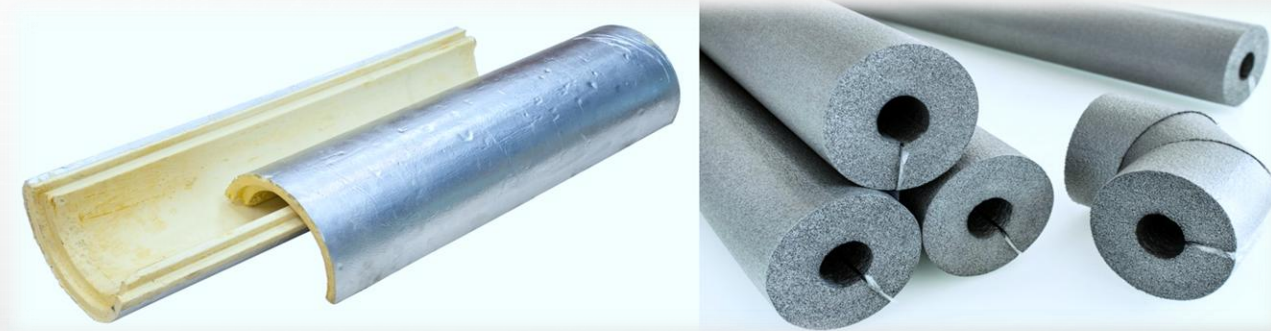
AB2750-EFB Water-based contact adhesive for HVAC and Duct Wrap

AB2750 Water-based Contact Adhesive:

- Lower VOC manufacturing
- Safer plant operation
- Full regulatory compliance

Replacing current systems without loss in productivity and functional performance:

- ❖ Solvent acrylics
- ❖ Solvent PU
- ❖ Extrusion lamination



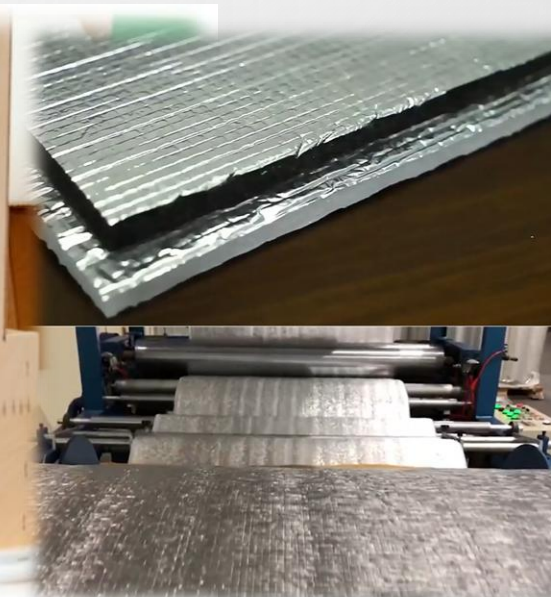
AB2750-EFB Water-based contact adhesive for Furniture & Underlayment EPE foam bonding

Applications:

- **Flooring underlay**
- **Acoustic foam**
- **Furniture cushioning**
- **Mattress components**

AB2750-EFB provides some of the unparalleled characteristics for productivity and performance beyond solvent-based adhesives:

- ❑ **Sprayable and roller-coating water-based contact adhesives**
- ❑ **Outstanding pressure-sensitive laminating adhesives**
- ❑ **Health manufacturing meets all indoor air quality regulations**
- ❑ **Solvent and VOC-free with no emissions**



AB2750-EFB Water-based contact adhesive for EPE foam Fabrication & Die-Cutting

EPE foam converters assemble:

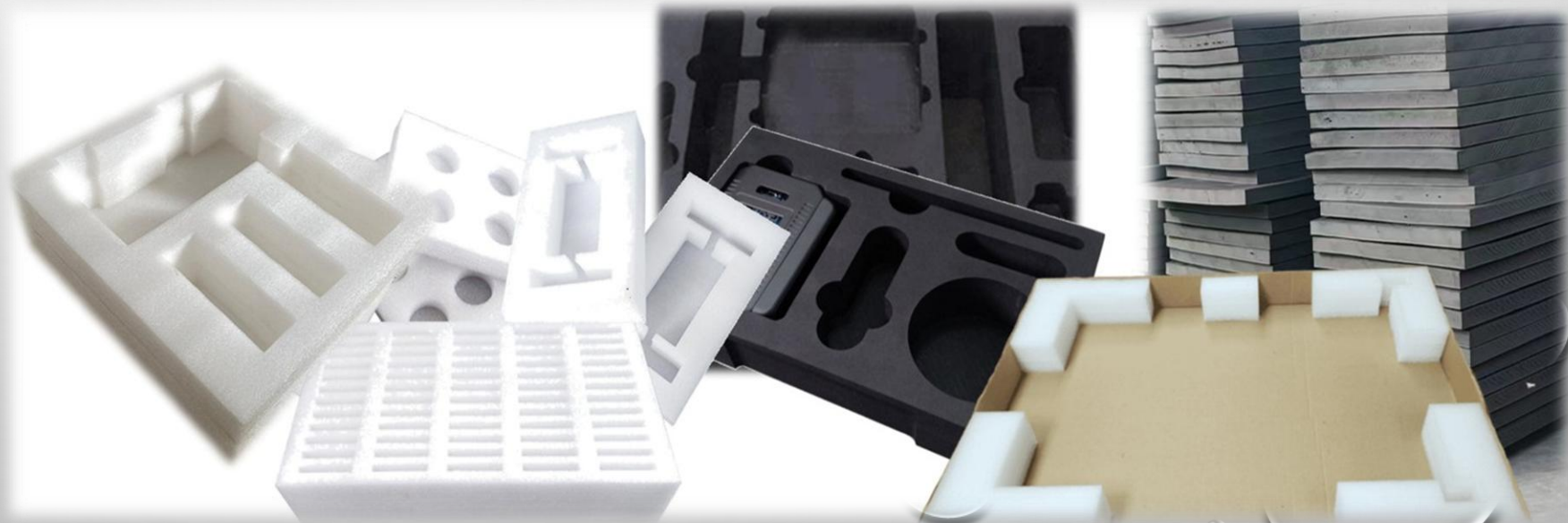
- ❑ **Inserts**
- ❑ **Multi-layer blocks**
- ❑ **Custom protective packaging**

Today's solutions and methods:

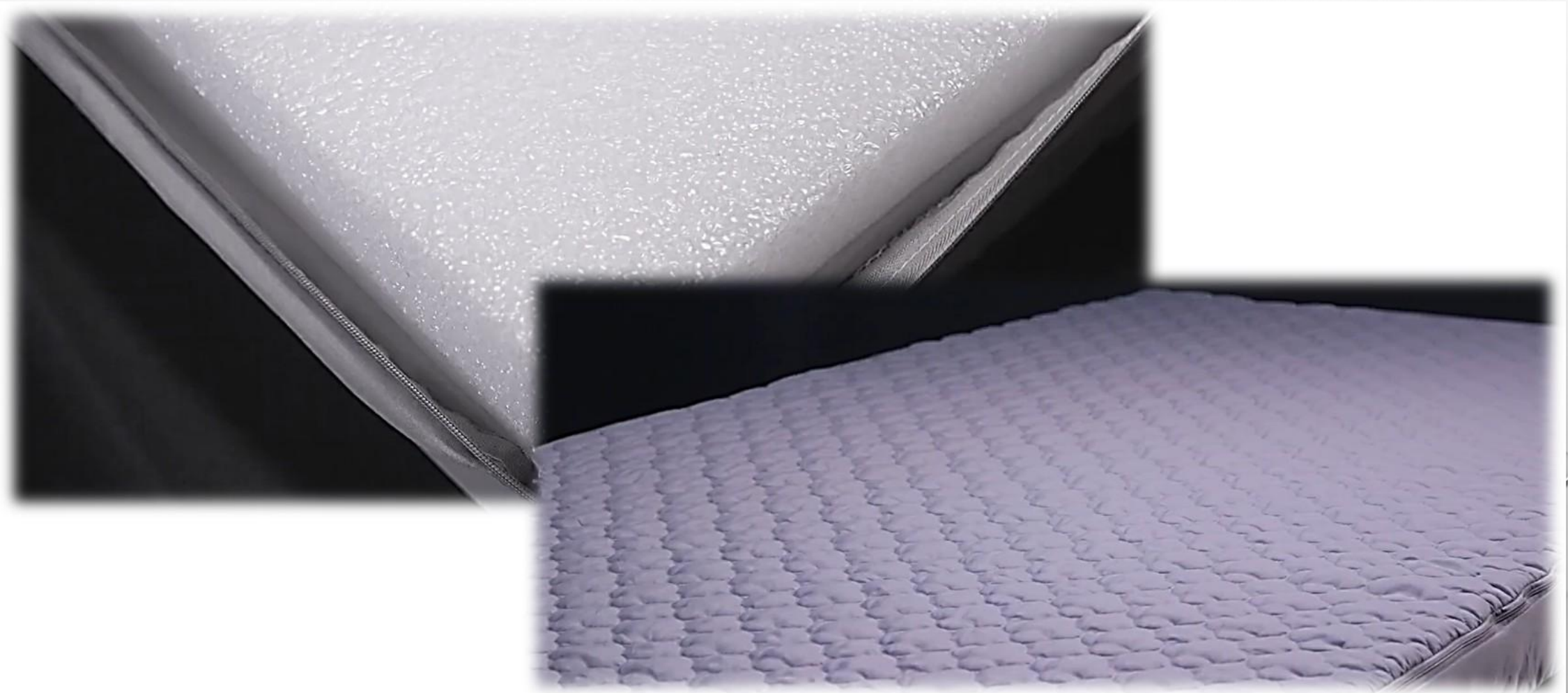
- Double-sided tape
- Solvent-based adhesive
- Hot melt

AB2550-PLUS and AB2750-PLUS water-based Adhesives:

- **Fast-tack with spraying without over-spray**
- **No overspray for ease of use**
- **Repositionable before setting**

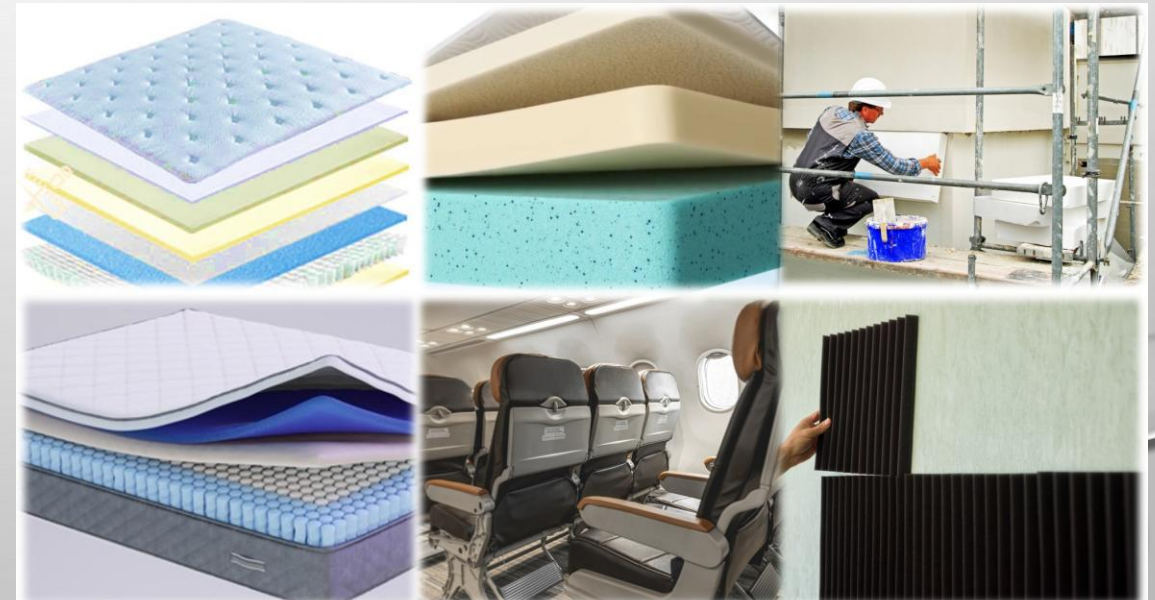


EPE, with its outstanding moisture barrier, when laminated to foam gel with QUICKBOND™ AB2750-EFB can provide the lowest cost mattress for all occasions



AIT Chemical Coral Industries Pioneered Some of the Water-Based Adhesives Meeting Challenges of Foam Bonding Industries:

1. **World's first EPE foam bonding water-based adhesive**
 - **EPE laminating water-based contact adhesive**
2. **Instant bonding PU and gel foam water-based adhesive**
3. **Water-moisture-resistant foam bonding water-based adhesive**



RAPID BONDING, WATER-BASED ADHESIVE FOR FOAM MATTRESS MANUFACTURING



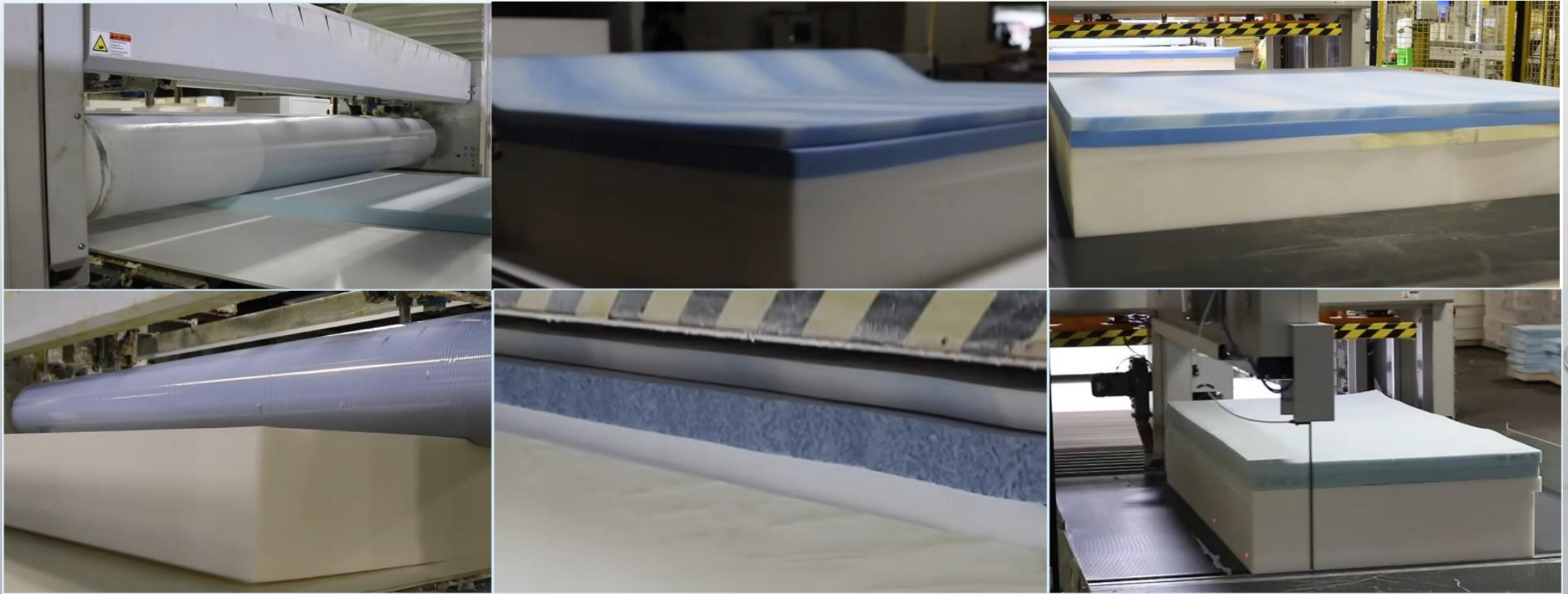
AB2550-FPB

- **Rapid foam-to-foam and foam-to-substrate bonding**
- **Flexibility matching high flexibility foams**
- **100% water-based, VOC-free and solvent-free**



AB2550-FPB

- **Rapid foam-to-foam and foam-to-substrate bonding**
- **Flexibility matching high flexibility foams**
- **100% water-based, VOC-free and solvent-free**

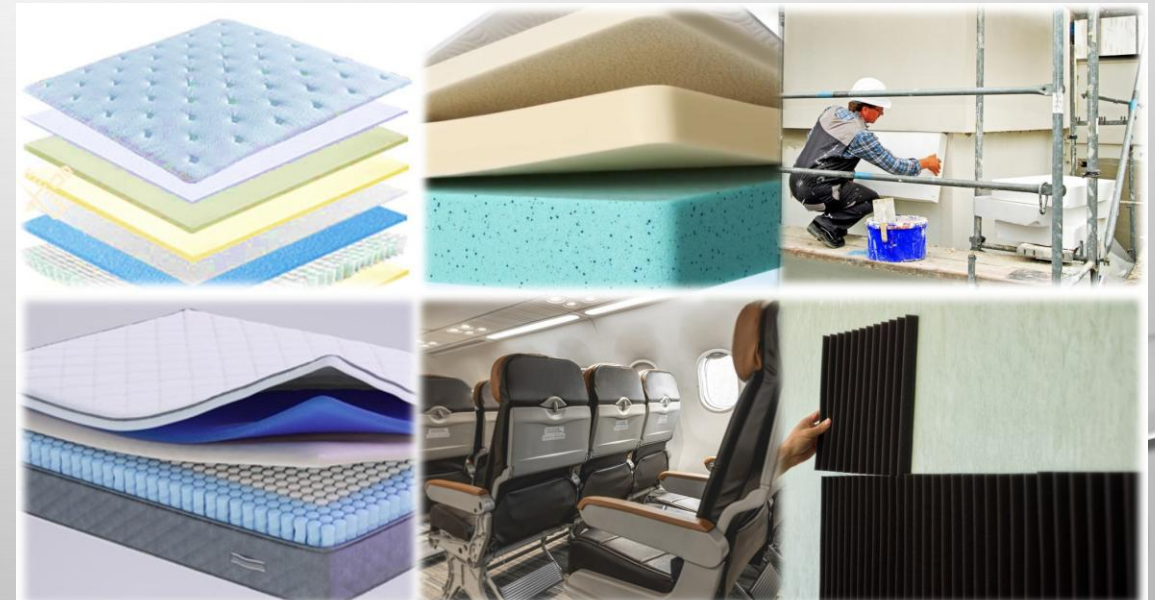


**AB2550-PFB is proven to be much faster
than most of the water-based adhesive
for foam bonding**



AIT Chemical Coral Industries Pioneered Some of the Water-Based Adhesives Meeting Challenges of Foam Bonding Industries:

1. **World's first EPE foam bonding water-based adhesive**
 - **EPE laminating water-based contact adhesive**
2. **Instant bonding PU and gel foam water-based adhesive**
3. **Water-moisture-resistant foam bonding water-based adhesive**



INSTANT FOAM-TO-FOAM, FOAM-TO-WOOD, PLASTIC, AND METAL BONDING

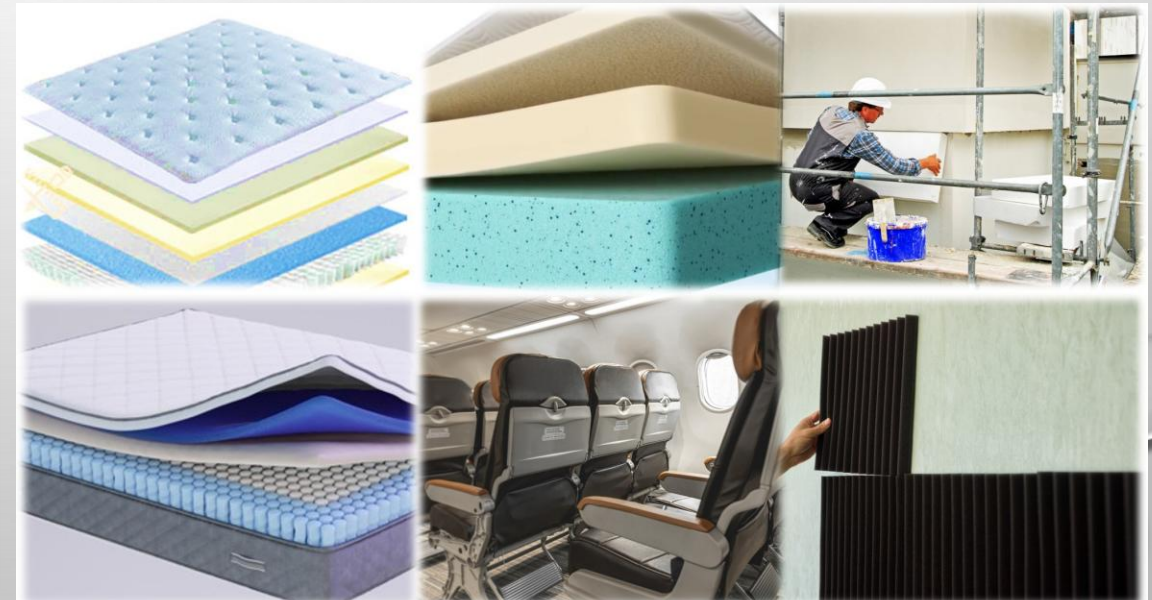
➤ AB2550-PFB



**AIT Coral Industries has a proven history in
foam bonding for furniture applications**

AIT Chemical Coral Industries Pioneered Some of the Water-Based Adhesives Meeting Challenges of Foam Bonding Industries:

1. World's first EPE foam bonding water-based adhesive
 - EPE laminating water-based contact adhesive
2. Instant bonding PU and gel foam water-based adhesive
3. Water-moisture-resistant foam bonding water-based adhesive



AIT Coral Industries has some of the industry's best and proven moisture-water-resistant water-based contact adhesive for some special applications

➤ **CC4358**

➤ **AB2750-PLUS**



AIT Coral Industries has a proven history in heat-activated water-based contact adhesive bonding for some critical applications

- ✓ **CC4158**
- ✓ **CC4358**



AIT Coral Industries has a proven history in supplying fire-retardant contact adhesive bonding for aircraft upholstery applications



- **AB2750-FR**
- **AB2550-FR**
- **CC4358-FR**





Princeton Junction, NJ



Princeton, NJ



Pico Rivera, CA



San Diego, CA

AiT

Chemical

AIT Chemical, Inc.
Princeton, NJ

Visit us on the web:
www.aitchemical.com

Send us an email:
ait@aitchemical.com

Give us a call: 1-(609)-799-9388



Shenzhen, China

BUREAU VERITAS
Certification

AMERASIA INTERNATIONAL TECHNOLOGY INC.

70 WASHINGTON ROAD
PRINCETON JUNCTION, NJ 08550 USA

Bureau Veritas Certification Holding SAS - UK Branch certifies that the Management System of the above organization has been audited and found to be in accordance with the requirements of the management system standards detailed below.

ISO 9001:2015

Scope of certification:
DESIGN AND MANUFACTURE ADHESIVE, THERMOPLASTIC, INTERFACE, AND SPECIALTY MATERIALS SERVING VARIOUS INDUSTRIES IN BOTH DOMESTIC AND INTERNATIONAL MARKETS

| | |
|---|-------------------|
| Original cycle start date: | August 19 1999 |
| Expiry date of previous cycle: | September 15 2018 |
| Certification / Recertification / Audit date: | June 1 2018 |
| Certification / Recertification cycle start date: | October 31 2018 |

Subject to the continued satisfactory operation of the organization's Management System, this certificate expires on: **August 10 2020**

Certificate No. **05912218** Version: 1

Signed on behalf of BVCH S.A. - UK Branch
Certification body address: 8F Place, 40 Place Street, London E1 3AB, United Kingdom
Local office: 1900 Greenway Park Drive, Suite 200A, Houston, TX 77060

Further information regarding the scope of this certificate and the applicability of the management system requirements may be obtained by contacting the organization. To obtain the certificate, contact the Bureau Veritas Certification Body.

Page 1 of 1

